

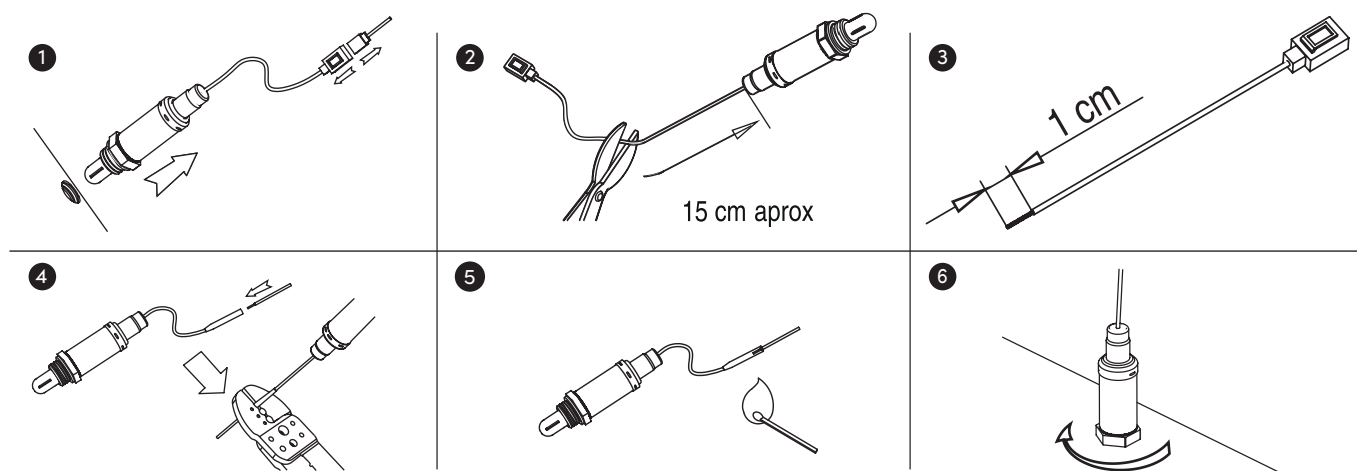
TECH TIPS

OXYGEN SENSORS




REFS. 301002, 301003, 301005, 301006 | ASSEMBLY INSTRUCTIONS

HOW TO INSTALL AN UNIVERSAL OXYGEN SENSOR?



1. Disconnect the battery, unplug and remove the connector from the oxygen sensor to be replaced.
2. Cut the sensor cables to approximately 15 cm.
3. Strip the wires on both sides without damaging the metal.
4. Connect the wires to the new sensor abiding by the correct colours (see table below), then tighten the rings.
5. Heat the heat-shrink tubing to secure the connections.
6. Install the new sensor, reconnect the cable along its original route and reconnect the battery.

WIRE COLOUR MATCHING TABLE:



+								
-								



Technical hotline

+33 (0)4 72 88 12 63

hotline.aftermarket@efiautomotive.com